



DECORATIVE HANDLES

HÄFELE



DECORATIVE HANDLES

A handle has the potential to transform your design by injecting personality, texture and shape, whilst continuing to provide that all-important functional element.

A vital part of every cabinet, wardrobe and door, handles come in all different shapes and sizes to make them a standout showpiece in themselves or to seamlessly blend into your design – whatever your preference.

At Häfele we use our design experience, industry-leading contacts and furniture expertise to bring together a wide selection of decorative handles to offer you that finishing touch for your design. For ease, we have separated our handles brochure into some of the key trends in furniture design.

While this brochure contains some firm favourites, our extensive handles range can be found on our website www.hafele.co.uk/handles.

MODERN LIFE

PAGES 4-45

MODERN CLASSICS

PAGES 46-67

VINTAGE

PAGES 68-75

URBAN

PAGES 76-87

SLEEK & SIMPLE

PAGES 88-107



Identifies our most cost-effective option. Great for projects on a budget.



Straight down the middle for pricing and aesthetics. If you're looking for handles with a bit more flair and are willing to put some more budget aside for them, these are the handles for you.



For the more extravagant designs and budgets to match, these handles are certainly statement pieces for quality and design.

MODERN LIFE

If high-end streamlined design reflects your style, then the Häfele Modern Life collection is undoubtedly what you are looking for. The collection includes designs ranging from stainless steel bar handles to profile handle systems, with finishes to match appliances and accessories throughout the home.



BIOKO



PULL

A rectangular pull handle with two attachment points in polished chrome.

LENGTH	HOLE CENTRES	CAT. NO.
POLISHED CHROME		
256 mm	192 mm	111.64.234
352 mm	288 mm	111.64.237

£££



LUCA



PULL

A rectangular T-handle with one attachment point and rounded corners in polished chrome.

LENGTH	HEIGHT	CAT. NO.
POLISHED CHROME		
94 mm	21 mm	100.63.200

£££





FINN



TRIM

The Finn Trim handle made from aluminum finished in stainless steel.

LENGTH	HOLE CENTRES	CAT. NO.
STAINLESS STEEL EFFECT		
220 mm	192 mm	112.84.014

£££



ELLA



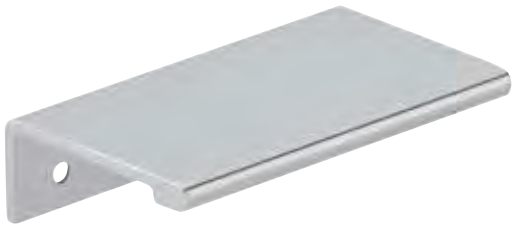
PULL

The Ella pull handle has a sloping edge and is available in three finishes.

LENGTH	HOLE CENTRES	CAT. NO.
POLISHED CHROME		
44 mm	32 mm	124.41.202
MATT CHROME		
44 mm	32 mm	124.41.402
MATT NICKEL		
44 mm	32 mm	124.41.602



QUINN



PULL

The Quinn pull handle made from aluminum is available in polished chrome.

LENGTH	HOLE CENTRES	CAT. NO.
POLISHED CHROME		
70 mm	50 mm	124.02.220



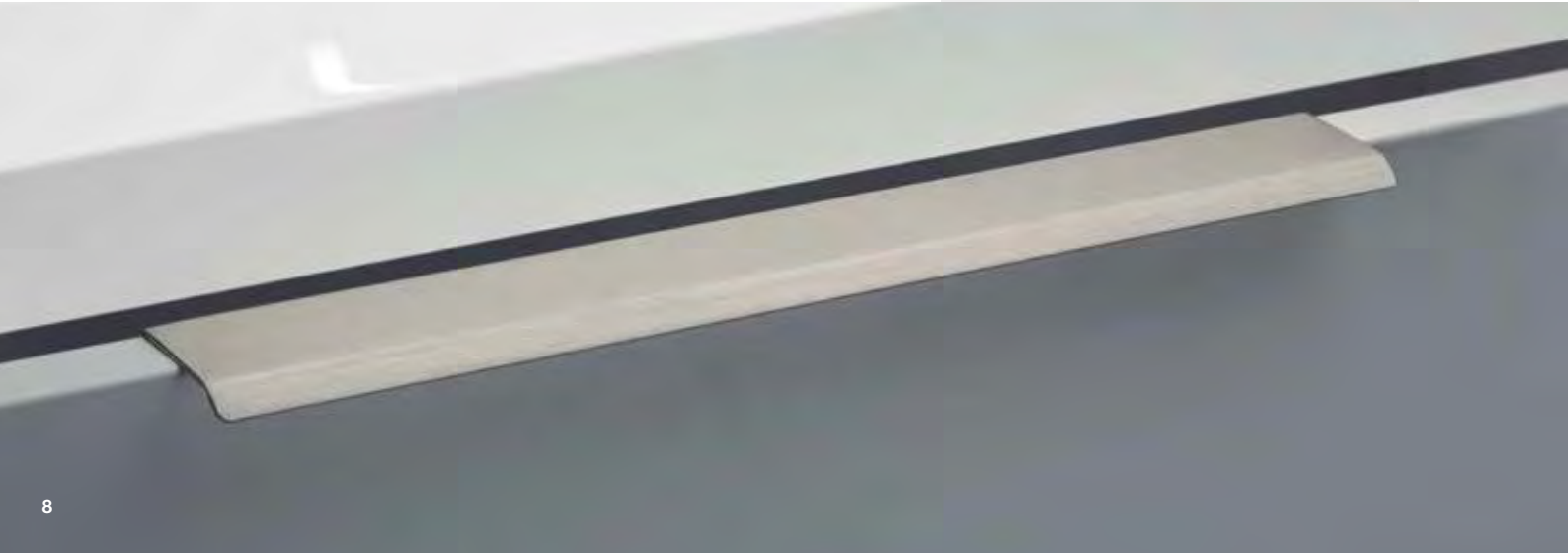
CURVE



PROFILE

The Curve profile handle is sloped with rounded corners, available in three finishes.

LENGTH	HOLE CENTRES	CAT. NO.
STAINLESS STEEL EFFECT		
45 mm	32 mm	126.45.031
100 mm	64 mm	126.45.032
200 mm	128 mm	126.45.035
300 mm	192 mm	126.45.037
400 mm	320 mm	126.45.038
500 mm	416 mm	126.45.039
MATT WHITE		
45 mm	32 mm	126.45.751
200 mm	128 mm	126.45.755
MATT BLACK		
45 mm	32 mm	126.45.351
200 mm	128 mm	126.45.355





NICK



PULL

The Nick pull handle fits flush to the furniture. It's made from zinc alloy and is available in two brushed finishes.

LENGTH	HOLE CENTRES	CAT. NO.
BRUSHED COPPER		
50 mm	32 mm	126.45.060
178 mm	160 mm	126.45.061
BRUSHED BRASS		
50 mm	32 mm	126.45.062
178 mm	160 mm	126.45.063





RITTA



PROFILE

The Ritta profile handle slopes over the edge of your furniture to give the user a solid grip in their fingertips. Available in three popular finishes.

LENGTH	HOLE CENTRES	CAT. NO.
POLISHED CHROME		
130 mm	64 mm	126.45.050
STAINLESS STEEL EFFECT		
130 mm	64 mm	126.45.051
MATT BLACK		
130 mm	64 mm	126.45.052



ONA



PROFILE

The Ona profile handle has a simple sloping effect fixing to the edge of your furniture. It's pleasant for the user to hold and is available in two finishes.

LENGTH	HOLE CENTRES	CAT. NO.
BRUSHED GREY		
50 mm	32 mm	126.45.110
200 mm	128 mm	126.45.111
350 mm	256 mm	126.45.112
1100 mm	1056 mm	126.45.113
BRUSHED BLACK		
50 mm	32 mm	126.45.120
200 mm	128 mm	126.45.121
350 mm	256 mm	126.45.122
1100 mm	1056 mm	126.45.123



NOMA



PROFILE

The Noma profile handle peeps over the edge of your furniture giving a barely-there appearance to the user. It's interesting shape makes a talking point for any modern kitchen.

LENGTH	HOLE CENTRES	CAT. NO.
STAINLESS STEEL EFFECT		
200 mm	128 mm	126.45.045
350 mm	256 mm	126.45.048
BRIGHT ANODISED		
200 mm	128 mm	126.45.965
350 mm	256 mm	126.45.969
ANTIQUE BRONZE		
200 mm	128 mm	126.45.046
350 mm	256 mm	126.45.049



PORTOBELLO



PROFILE

The Portobello profile handle is a thin rectangular handle in stainless steel.

LENGTH	CAT. NO.
STAINLESS STEEL EFFECT	
148 mm	126.45.010
198 mm	126.45.011
248 mm	126.45.012
298 mm	126.45.013
348 mm	126.45.014
398 mm	126.45.015
448 mm	126.45.016
498 mm	126.45.017
598 mm	126.45.018
698 mm	126.45.019
798 mm	126.45.020
898 mm	126.45.021
998 mm	126.45.022
1198 mm	126.45.023

£££

AVALON



TRIM

The Avalon profile handle features a rectangular trim in stainless steel.

LENGTH	CAT. NO.
STAINLESS STEEL EFFECT	
148 mm	109.48.930
268 mm	109.48.931
298 mm	109.48.932
333 mm	109.48.933
398 mm	109.48.934
448 mm	109.48.935
498 mm	109.48.936
598 mm	109.48.937
798 mm	109.48.938
998 mm	109.48.939

£££

EXCLUSIVE TO
HÄFELE

Fixings included

GOLA PROFILES AND MATCHING PLINTHS FOR HANDLE FREE APPLICATIONS



Our on-trend range of complementary Gola profiles and plinths offers maximum style and functionality.

There are six different systems in a choice of seven finishes available from Häfele to suit a variety of different applications.

Whether it's a matching finish or contrasting design, the Gola range guarantees an eye-catching kitchen experience.



Silver anodised



Bronze anodised



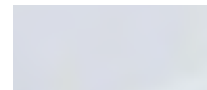
Graphite powder coated



Brushed brass anodised



Brushed copper anodised



Matt white powder coated



Matt black powder coated



For more info visit hafele.co.uk



LINE



PROFILE

The Line profile handle has a simple design, easy to fix from the rear of the cabinet door or drawer in a matt anthracite finish.

LENGTH	HOLE CENTRES	CAT. NO.
MATT ANTHRACITE		
78 mm	64 mm	111.71.510
174 mm	160 mm	111.71.511
334 mm	320 mm	111.71.512





Photo shows Graf 2 handle, pages 30-31

ARCO



The Arco bow handle has a long rounded curve with a smooth finish in stainless steel or polished chrome. Matching knob available.

BOW

LENGTH	HOLE CENTRES	CAT. NO.
STAINLESS STEEL EFFECT		
185 mm	128 mm	111.62.612
281 mm	224 mm	111.62.615
POLISHED CHROME		
185 mm	128 mm	111.62.212
281 mm	224 mm	111.62.215

KNOB

WIDTH	HEIGHT	CAT. NO.
STAINLESS STEEL EFFECT		
20 mm	35 mm	133.91.610

£££

EXCLUSIVE TO



HÄFELE

Fixings included



LIBRA

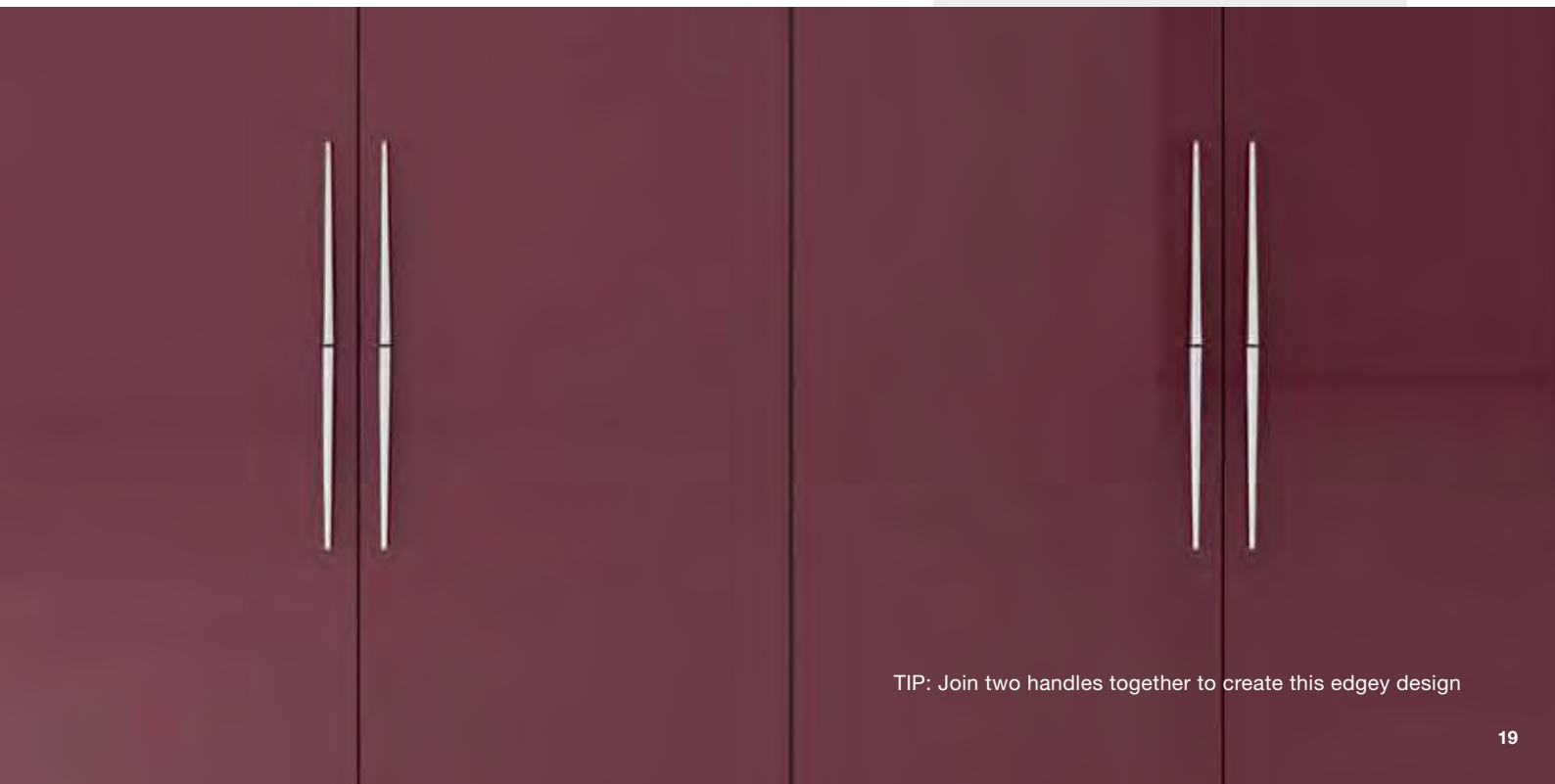


PULL

The Libra pull handle is a long tubular handle which thins at the end giving it a very contemporary look and feel. Available in polished chrome.

LENGTH	HOLE CENTRES	CAT. NO.
POLISHED CHROME		
130 mm	32 mm	107.03.200
210 mm	32/64 mm	107.03.201
280 mm	64/96 mm	107.03.202

£ £ £



TIP: Join two handles together to create this edgey design

OSAKA



PULL

The Osaka pull handle has a bucket shape and can be fitted in either direction to the designer's specification. This pull handle is available in three finishes.

LENGTH	HOLE CENTRES	CAT. NO.
SATIN BRASS		
127 mm	96 mm	110.22.080
191 mm	160 mm	110.22.081
ANTIQUE COPPER		
127 mm	96 mm	110.22.053
191 mm	160 mm	110.22.086
GRAPHITE		
191 mm	160 mm	110.22.586
351 mm	320 mm	110.22.589





Photo shows Osaka handle, page 20

FACTORY



D HANDLE

The Factory D Handle has a very slim flat edge in a textured rusting effect, available in two finishes. Ideal for any industrial style and modern home.

LENGTH	HOLE CENTRES	CAT. NO.
IRON EFFECT MATT		
183 mm	160 mm	116.60.200
247 mm	224 mm	116.60.201
ANTIQUÉ BRASS		
183 mm	160 mm	116.60.220
247 mm	224 mm	116.60.221

£ £ £



TONDA



D HANDLE

The Tonda D Handle is a thin cylindrical design which widens at the points of fixing, available in two sizes in polished nickel.

LENGTH	HOLE CENTRES	CAT. NO.
POLISHED NICKEL		
184 mm	160 mm	110.22.290
344 mm	320 mm	110.22.291

£ £ £



SWING



D HANDLE

The Swing handle differs from other D handles by its inner curve that gives a pleasing solidity to the handle when gripped.

LENGTH	HOLE CENTRES	CAT. NO.
MATT BRASS		
72 mm	64 mm	111.71.500
168 mm	160 mm	111.71.501
328 mm	320 mm	111.71.502

£ £ £





BUTTON



D HANDLE

The design of the Button handle is a reinterpretation of a vintage look, with a simple shape and pure lines. Available in pewter, antique bronze or polished chrome finish.

LENGTH	HOLE CENTRES	CAT. NO.
PEWTER*		
175 mm	160 mm	106.69.691
ANTIQUE BRONZE*		
175 mm	160 mm	106.69.692
POLISHED CHROME		
175 mm	160 mm	106.69.693



RAVIOLO

The design of the Raviolo collection would suit either vintage or industrial styles of kitchen and bathroom with its distinctive curve and arch.

BOW

LENGTH	HOLE CENTRES	CAT. NO.
PEWTER		
172 mm	96 mm	106.69.295
ANTIQUE BRONZE		
172 mm	96 mm	106.69.296

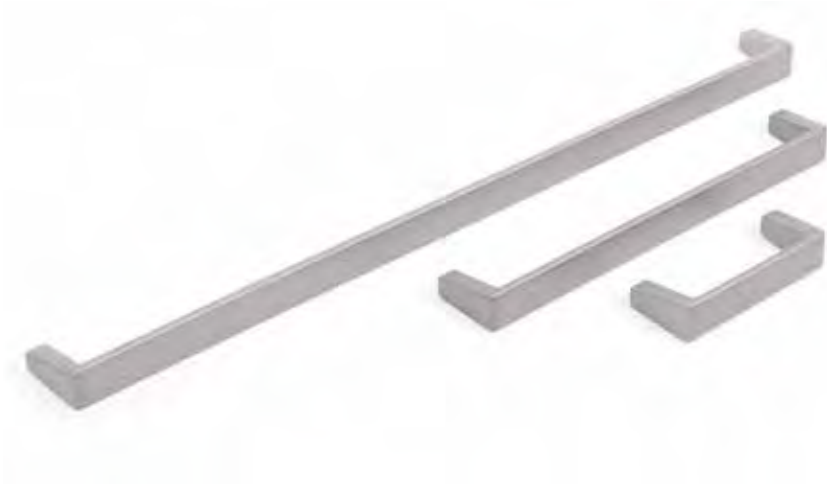
KNOB

DIAMETER	HEIGHT	CAT. NO.
PEWTER		
29 mm	27 mm	106.69.300
ANTIQUE BRONZE		
29 mm	27 mm	106.69.301

£ £ £



LEVEL



PULL

The Level handle is available in a matt anthracite finish, with a simple design to suit most kitchen styles.

LENGTH	HOLE CENTRES	CAT. NO.
MATT ANTHRACITE		
72 mm	64 mm	111.71.505
168 mm	160 mm	111.71.506
328 mm	320 mm	111.71.507





PLANE



PULL

The Plane handle has a distinctive ridge design and is available in two lengths with a matt anthracite finish.

LENGTH	HOLE CENTRES	CAT. NO.
MATT ANTHRACITE		
178 mm	160 mm	111.71.516
338 mm	320 mm	111.71.517

£ £ £





CURLY



D HANDLE

The Curly D handle has soft contoured edges and a very sleek design, available in a matt black finish, ideal for modern kitchens.

LENGTH	HOLE CENTRES	CAT. NO.
MATT BLACK		
79 mm	64 mm	111.71.010
175 mm	160 mm	111.71.011
335 mm	320 mm	111.71.012



PEMBRIDGE



D HANDLE

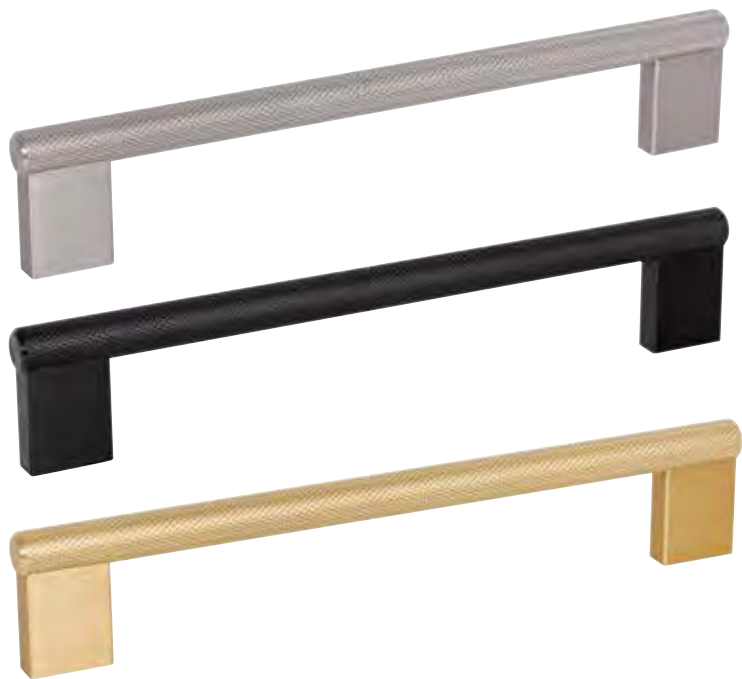
The Pembridge D Handle has a flat face which curves smoothly into the points of attachment.

LENGTH	HOLE CENTRES	CAT. NO.
POLISHED CHROME		
136 mm	128 mm	116.04.225
200 mm	192 mm	116.04.227
328 mm	320 mm	116.04.228
STAINLESS STEEL EFFECT		
136 mm	128 mm	116.04.625
200 mm	192 mm	116.04.627
328 mm	320 mm	116.04.628

£ £ £



GRAF 2



The Graf range of handles and knobs has a mesh surface texture, providing a modern industrial look, as well as a pleasant feel.

BAR

LENGTH	HOLE CENTRES	CAT. NO.
INOX		
182 mm	160 mm	132.19.110
278 mm	256 mm	132.19.111
1200 mm	1178/589 mm	132.19.112
BLACK		
182 mm	160 mm	132.19.115
278 mm	256 mm	132.19.116
1200 mm	1178/589 mm	132.19.117
DARK BRASS		
182 mm	160 mm	132.19.120
278 mm	256 mm	132.19.121
1200 mm	1178/589 mm	132.19.122

£ £ £



GRAF 2



CYLINDRICAL KNOB

DIAMETER	HEIGHT	CAT. NO.
INOX		
10 mm	33 mm	132.19.100
BLACK		
10 mm	33 mm	132.19.101
DARK BRASS		
10 mm	33 mm	132.19.102

£ £ £



GRAF 2



T KNOB

WIDTH	HEIGHT	CAT. NO.
INOX		
60 mm	33 mm	132.19.105
BLACK		
60 mm	33 mm	132.19.106
DARK BRASS		
60 mm	33 mm	132.19.107



GRAF



KNOB

DIAMETER	HEIGHT	CAT. NO.
POLISHED CHROME		
17 mm	28 mm	132.15.230
BLACK		
17 mm	28 mm	132.19.211
DARK BRASS		
17 mm	28 mm	132.19.210



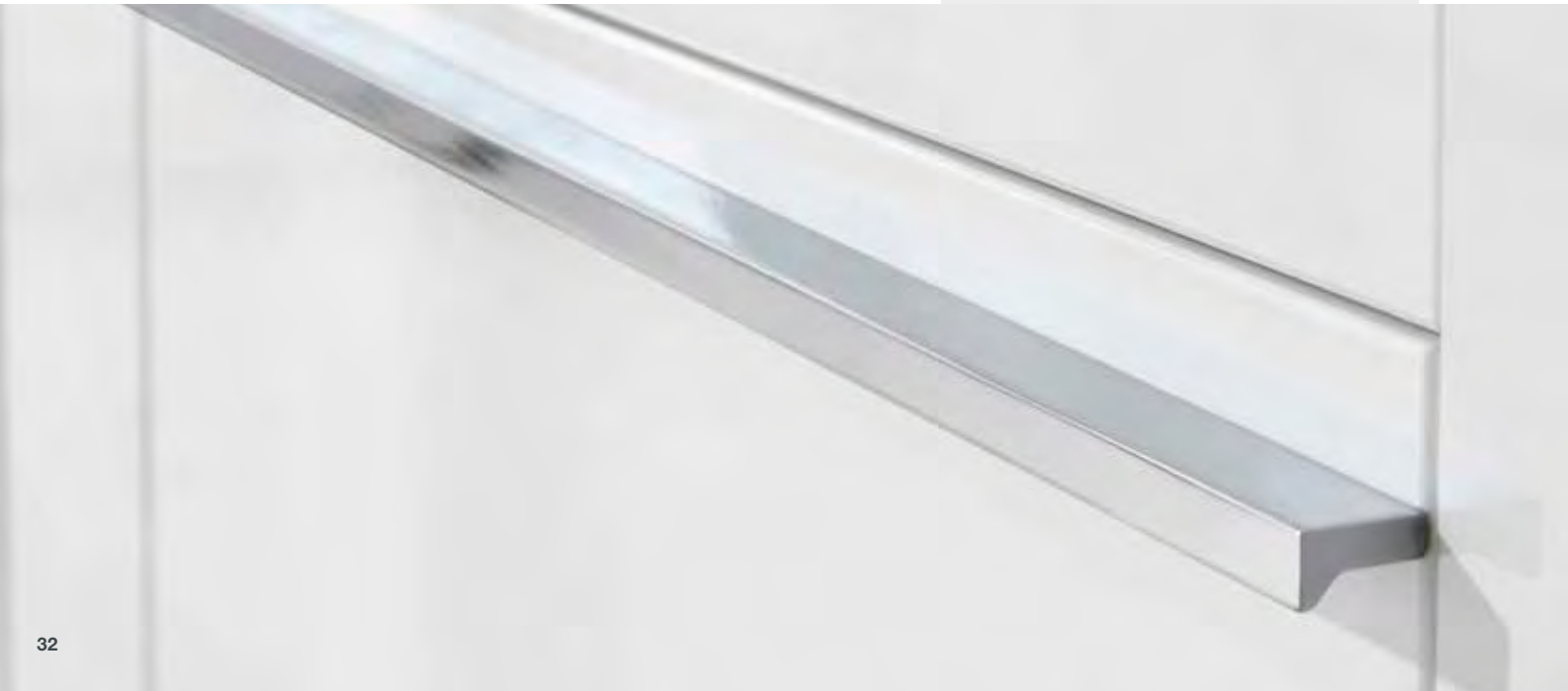
ANGEL



PULL

The Angel is a pull handle with a flush attachment to the furniture. It has a flat rectangular edge with a slight dip for grip and is available in three finishes.

LENGTH	HOLE CENTRES	CAT. NO.
POLISHED CHROME		
200 mm	96/128/160 mm	108.66.230
400 mm	256/320 mm	108.66.231
500 mm	416/320 mm	108.66.232
900 mm	640 mm	108.66.234
MATT BLACK		
200 mm	128/160 mm	108.66.330
STAINLESS STEEL EFFECT		
200 mm	96/128/160 mm	108.66.030



DISCO



PULL

The Disco is a rectangular pull handle with a textured face, available in polished chrome.

LENGTH	HOLE CENTRES	CAT. NO.
POLISHED CHROME		
204 mm	160/192 mm	110.22.243

£££



U



PULL

The U handle, with its straight lines, delicately adapts to different styles of furniture. A design that never goes out of fashion, now available in a brushed copper finish.

LENGTH	HOLE CENTRES	CAT. NO.
MATT BLACK		
136.5 mm	128 mm	108.66.385
328.5 mm	320 mm	108.66.386
500.5 mm	492 mm	108.66.387
POLISHED CHROME		
136.5 mm	128 mm	108.66.285
328.5 mm	320 mm	108.66.286
500.5 mm	492 mm	108.66.287
BRUSHED BRASS		
136.5 mm	128 mm	108.66.388
200.5 mm	192 mm	108.66.389
328.5 mm	320 mm	108.66.390
500.5 mm	492 mm	108.66.391
BRUSHED COPPER		
136.5 mm	128 mm	108.66.376
200.5 mm	192 mm	108.66.377
328.5 mm	320 mm	108.66.378
500.5 mm	492 mm	108.66.379





Photo shows U handle, page 34

COCO



KNOB

The Coco knob is a traditionally shaped round knob in stainless steel.

DIAMETER	HEIGHT	CAT. NO.
STAINLESS STEEL EFFECT		
30 mm	23 mm	134.61.610



ACACIA



KNOB

The Acacia knob is a modern take on the traditional shaped knob in a round shape with a flat edge.

DIAMETER	HEIGHT	CAT. NO.
STAINLESS STEEL EFFECT		
46 mm	30 mm	131.15.000





METROPOLIS



PULL

The Metropolis pull handle is a rectangular shaped handle with curved corners. Finished in satin stainless steel.

LENGTH	HOLE CENTRES	CAT. NO.
GRADE 304 SATIN STAINLESS STEEL		
208 mm	192 mm	115.62.004
336 mm	320 mm	115.62.008
464 mm	448 mm	115.62.011

£££





Photo shows Sea Grass handle, page 39

SEA GRASS



The Sea Grass collection is where sophisticated style meets organic inspiration - the detailed ribbed design beautifully reflects textures found in nature.

CUP

LENGTH	HOLE CENTRES	CAT. NO.
GOLDEN CHAMPAGNE		
98 mm	76 mm	133.50.143
OIL RUBBED BRONZE*		
98 mm	76 mm	133.50.144

PULL

LENGTH	HOLE CENTRES	CAT. NO.
GOLDEN CHAMPAGNE		
191 mm	160 mm	133.50.374
OIL RUBBED BRONZE*		
191 mm	160 mm	133.50.377

KNOB

DIAMETER	HEIGHT	CAT. NO.
GOLDEN CHAMPAGNE		
35 mm	30 mm	133.50.303
OIL RUBBED BRONZE*		
44 mm	35 mm	133.50.306

£££



*Product is subject to variations in finish due to the finishing and manufacturing process of certain materials

KANE



The Kane collection comprises knob, pull and cup handle in an oil rubbed bronze finish to create a classic understated look that never goes out of style.

CUP

LENGTH	HOLE CENTRES	CAT. NO.
OIL RUBBED BRONZE		
111 mm	76 mm	133.50.140

PULL

LENGTH	HOLE CENTRES	CAT. NO.
OIL RUBBED BRONZE		
144 mm	128 mm	133.50.340

KNOB

DIAMETER	HEIGHT	CAT. NO.
OIL RUBBED BRONZE		
30 mm	30 mm	133.50.609



Product is subject to variations in finish due to the finishing and manufacturing process of certain materials

ROCHDALE



The rivets and architectural details of the Rochdale collection will give a utilitarian elegance to the kitchen. Available in a satin nickel finish.

CUP

LENGTH	HOLE CENTRES	CAT. NO.
SATIN NICKEL		
135 mm	96 mm	133.50.142

PULL

LENGTH	HOLE CENTRES	CAT. NO.
SATIN NICKEL		
154 mm	128 mm	133.50.370

KNOB

DIAMETER	HEIGHT	CAT. NO.
SATIN NICKEL		
32 mm	29 mm	133.50.632





OBERON



KNOB

The Oberon knob has a clean simple shape, yet its recessed edges add an elegant intrigue to its design.

DIAMETER	HEIGHT	CAT. NO.
GOLDEN CHAMPAGNE		
35 mm	30 mm	133.50.618
POLISHED NICKEL		
35 mm	30 mm	133.50.622



CARRIONE



The Carrione T knob and pull handles are finished in marble white with polished or oil rubbed bronze mountings, intricately crafted with precise detail.

PULL

LENGTH	HOLE CENTRES	CAT. NO.
MARBLE WHITE/POLISHED NICKEL		
160 mm	96 mm	133.53.035
191 mm	128 mm	133.53.036
MARBLE WHITE/OIL RUBBED BRONZE*		
160 mm	96 mm	133.53.037
191 mm	128 mm	133.53.038

T KNOB

WIDTH	HEIGHT	CAT. NO.
MARBLE WHITE/POLISHED NICKEL		
64 mm	40 mm	133.53.033
MARBLE WHITE/OIL RUBBED BRONZE*		
64 mm	40 mm	133.53.034

£££



*Product is subject to variations in finish due to the finishing and manufacturing process of certain materials

ST. VINCENT



The St. Vincent T knob and pull handle's angular and geometric design create interesting reflections of light when installed.

PULL

LENGTH	HOLE CENTRES	CAT. NO.
POLISHED NICKEL		
191 mm	128 mm	133.50.388
GOLDEN CHAMPAGNE		
191 mm	128 mm	133.50.382

T KNOB

WIDTH	HEIGHT	CAT. NO.
POLISHED NICKEL		
64 mm	37 mm	133.50.641
GOLDEN CHAMPAGNE		
64 mm	37 mm	133.50.639

£££

EXCLUSIVE TO
HÄFELE

Fixings
included
✓



Photo shows St. Vincent handle, page 44

MODERN CLASSICS

For the quintessential classic country style, a handle from the Modern Classic range is a must. Great on finished wood or painted shaker doors, these handles are created from a combination of traditional materials, integrating designs with a modern twist.



BRERA



D HANDLE

The Brera D handle is a chunky classic design, available in three popular metallic finishes to give it that modern edge.

LENGTH	HOLE CENTRES	CAT. NO.
SATIN NICKEL		
180 mm	160 mm	110.22.274
ANTIQUE COPPER		
180 mm	160 mm	110.22.275
PEWTER		
180 mm	160 mm	110.22.276

£ £ £



SHAPES



The Shapes D handle and matching knob are vintage-style country designs in two antique finishes.

D HANDLE

LENGTH	HOLE CENTRES	CAT. NO.
ANTIQUE COPPER		
178 mm	128 mm	110.22.277
ANTIQUE BRASS		
178 mm	128 mm	110.22.278

KNOB

WIDTH	HEIGHT	CAT. NO.
ANTIQUE COPPER		
41 mm	24 mm	110.22.279
ANTIQUE BRASS		
41 mm	24 mm	110.22.280

£ £ £

EXCLUSIVE TO
HÄFELE

Fixings
included

NORFOLK



BOW

The Norfolk bow handle has a distinctive look with its curved shape and antique finishes.

LENGTH	HOLE CENTRES	CAT. NO.
ANTIQUE BRASS		
133 mm	96 mm	101.85.102
ANTIQUE PEWTER		
133 mm	96 mm	101.85.902



TAPER



BOW

The Taper bow handle is a modern style handle in a cast iron finish.

LENGTH	HOLE CENTRES	CAT. NO.
CAST IRON		
181 mm	160 mm	120.64.013



Product is subject to variations in finish due to the finishing and manufacturing process of certain materials

TWISTER



The deep textures on the Twister range give this handle not only a unique look but also a distinctive feel.

DROP HANDLE

LENGTH	HOLE CENTRES	CAT. NO.
ANTIQUE PEWTER		
182 mm	160 mm	119.20.921

D HANDLE

LENGTH	HOLE CENTRES	CAT. NO.
ANTIQUE PEWTER		
182 mm	160 mm	119.20.910

PULL

WIDTH	HEIGHT	CAT. NO.
ANTIQUE PEWTER		
65 mm	33 mm	119.20.900

KNOB

DIAMETER	HEIGHT	CAT. NO.
ANTIQUE PEWTER		
30 mm	42 mm	119.21.900



BERWICK



The smooth lines of the Berwick range give this handle and knob an eye-catching design and textured feel.

PULL

WIDTH	HEIGHT	CAT. NO.
BRUSHED TIN		
163 mm	128 mm	123.00.932

KNOB

SIZE	HEIGHT	CAT. NO.
BRUSHED TIN		
35 mm	20 mm	120.23.931

£ £ £



SMOOTH



A modern design in a classic finish, the Smooth range in cast iron creates a trendy look.

CUP

LENGTH	HOLE CENTRES	CAT. NO.
CAST IRON		
104 mm	64 mm	120.67.951

BOW

LENGTH	HOLE CENTRES	CAT. NO.
CAST IRON		
192 mm	128 mm	120.67.963

KNOB

DIAMETER	HEIGHT	CAT. NO.
CAST IRON		
35 mm	32 mm	120.67.961

£££

 HANDMADE

 Fixings included



Photo shows Smooth handle, page 52

AUGUSTA



The Augusta range consists of a knob, bow handle and cup handle, designed to stand the test of time in style and quality. Available in five finishes.

BOW WITH BACKPLATES

LENGTH	HOLE CENTRES	CAT. NO.
MATT BLACK		
138 mm	128 mm	103.30.805
170 mm	160 mm	103.30.806
ANTIQUÉ COPPER		
138 mm	128 mm	103.30.005
170 mm	160 mm	103.30.006



AUGUSTA



You can also use without the backplate

CUP

LENGTH	HOLE CENTRES	CAT. NO.
STAINLESS STEEL EFFECT		
120 mm	96 mm	118.68.104
MATT BLACK		
120 mm	96 mm	118.68.804
ANTIQUÉ COPPER		
120 mm	96 mm	118.68.004

KNOB WITH BACKPLATES

WIDTH	HEIGHT	CAT. NO.
STAINLESS STEEL EFFECT		
15 mm	22 mm	110.35.380
30 mm	30 mm	110.35.392
POLISHED NICKEL		
15 mm	22 mm	110.35.381
30 mm	30 mm	110.35.391
POLISHED CHROME		
15 mm	22 mm	110.35.382
30 mm	30 mm	110.35.390
MATT BLACK		
15 mm	22 mm	110.35.384
30 mm	30 mm	110.35.393
ANTIQUÉ COPPER		
15 mm	22 mm	110.35.383
30 mm	30 mm	110.35.394



ODESSA



The Odessa range has a timeless design, available in three classic finishes and a range of designs to mix and match for all requirements.

CUP

LENGTH	HOLE CENTRES	CAT. NO.
POLISHED CHROME		
78 mm	64 mm	151.40.660
140 mm	128 mm	151.40.665
STAINLESS STEEL EFFECT		
78 mm	64 mm	151.40.661
140 mm	128 mm	151.40.666
BRUSHED COPPER		
78 mm	64 mm	151.40.662
140 mm	128 mm	151.40.667

BOW

LENGTH	HOLE CENTRES	CAT. NO.
POLISHED CHROME		
158 mm	128 mm	107.03.610
STAINLESS STEEL EFFECT		
158 mm	128 mm	107.03.611
BRUSHED COPPER		
158 mm	128 mm	107.03.613



ODESSA



BOW

LENGTH	HOLE CENTRES	CAT. NO.
POLISHED CHROME		
176 mm	160 mm	107.03.615
STAINLESS STEEL EFFECT		
176 mm	160 mm	107.03.616
BRUSHED COPPER		
176 mm	160 mm	107.03.617

KNOB

WIDTH	HEIGHT	CAT. NO.
POLISHED CHROME		
30 mm	40 mm	110.35.360
STAINLESS STEEL EFFECT		
30 mm	40 mm	110.35.361
BRUSHED COPPER		
30 mm	40 mm	110.35.362

£ £ £





Photo shows Ariel handle, page 59

ARIEL



The Ariel range is a traditional style cup handle and knob in polished chrome and pewter effect finishes.

CUP

LENGTH	HOLE CENTRES	CAT. NO.
POLISHED CHROME		
95 mm	76 mm	166.11.240*
PEWTER EFFECT		
95 mm	76 mm	166.11.905

KNOB

DIAMETER	HEIGHT	CAT. NO.
POLISHED CHROME		
33 mm	29 mm	134.06.200*
PEWTER EFFECT		
33 mm	29 mm	166.11.900



*Fixings not included

HENRIETTA



CUP

The Henrietta cup handle is a traditional looking handle available in three finishes including the increasingly popular polished black nickel effect.

LENGTH	HOLE CENTRES	CAT. NO.
POLISHED CHROME		
92 mm	76 mm	166.11.204*
STAINLESS STEEL EFFECT		
92 mm	76 mm	166.11.400*
POLISHED BLACK NICKEL		
92 mm	76 mm	166.11.305



*Fixings not included

HENRIETTA



D HANDLE

The Henrietta D handle is elegant in appearance, ideal for enhancing both classic and contemporary design styles. Available in two finishes.

LENGTH	HOLE CENTRES	CAT. NO.
POLISHED CHROME		
131 mm	96 mm	109.48.224
STAINLESS STEEL EFFECT		
131 mm	96 mm	118.53.600*



*Fixings not included

HENRIETTA



KNOB

The Henrietta knob is a contemporary cabinet knob with a concealed fixing. Available in two finishes.

DIAMETER	HOLE CENTRES	CAT. NO.
POLISHED CHROME		
38 mm	26 mm	134.39.210
STAINLESS STEEL EFFECT		
38 mm	26 mm	134.39.020



MAYBERRY



The Mayberry range has a traditional look with hidden screws.

CUP

LENGTH	HOLE CENTRES	CAT. NO.
POLISHED NICKEL		
128 mm	96 mm	151.40.650*

KNOB

DIAMETER	HEIGHT	CAT. NO.
POLISHED NICKEL		
32 mm	36 mm	123.02.130*
POLISHED BLACK NICKEL		
32 mm	36 mm	123.02.330



*Fixings not included

KNIGHTSBRIDGE



The Knightsbridge is perfect for an industrial or rustic look with its visible screws and bold design.

CUP

LENGTH	HOLE CENTRES	CAT. NO.
STAINLESS STEEL EFFECT		
104 mm	64 mm	118.55.620*

D HANDLE

LENGTH	HOLE CENTRES	CAT. NO.
STAINLESS STEEL EFFECT		
129 mm	96 mm	118.69.620

£ £ £



*Fixings not included

FABIAN



BOW

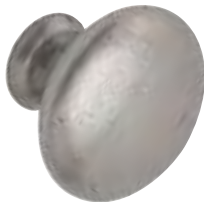
A rustic look, the Fabian bow handle has a strong design with visible screws.

LENGTH	HOLE CENTRES	CAT. NO.
PEWTER		
145.5 mm	96 mm	101.39.901

£ £ £



SORRENTO



KNOB

With an antique finish, the Sorrento knob adds a classic feel to cabinets.

DIAMETER	HEIGHT	CAT. NO.
ANTIQUE PEWTER		
35 mm	27 mm	133.97.913

£ £ £





BUXTON



KNOB

Finished in bold colours, the Buxton knob stands out from the cabinet.

DIAMETER	HEIGHT	CAT. NO.
NATURAL IRON*		
35 mm	38 mm	119.27.004
BLACK		
35 mm	38 mm	119.12.300



*Product is subject to variations in finish due to the finishing and manufacturing process of certain materials

Note: ±3mm tolerance on non-critical dimensions

QUESLETT



With a luxurious finish, the Queslett range adds a touch of class to a cabinet.

CUP

LENGTH	HOLE CENTRES	CAT. NO.
POLISHED NICKEL		
64 mm	40 mm	166.08.710
108 mm	96 mm	166.08.711
228 mm	202 mm	166.08.714

KNOB

WIDTH	HEIGHT	CAT. NO.
POLISHED NICKEL		
38 mm	36 mm	137.80.700



Note: ±3mm tolerance on non-critical dimensions and ±1mm on hole centre dimensions

GOLA PROFILES AND MATCHING PLINTHS FOR HANDLE FREE APPLICATIONS



Our on-trend range of complementary Gola profiles and plinths offers maximum style and functionality.

There are six different systems in a choice of seven finishes available from Häfele to suit a variety of different applications.

Whether it's a matching finish or contrasting design, the Gola range guarantees an eyecatching kitchen experience.



Silver anodised



Bronze anodised



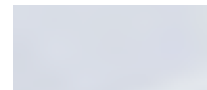
Graphite powder coated



Brushed brass anodised



Brushed copper anodised



Matt white powder coated



Matt black powder coated



For more info visit hafele.co.uk

VINTAGE

Divine, decadent and daring, Vintage is possibly the most avant-garde category, and the one you will want to explore for adding drama to a piece of furniture, be it Heritage, Retro, French, New Victorian, Oriental or Art Deco.



CHATSWORTH



The Chatsworth handle range has a luxurious feel and is available in two popular finishes.

CUP

LENGTH	HOLE CENTRES	CAT. NO.
POLISHED NICKEL		
92 mm	76 mm	151.07.701
BRUSHED COPPER*		
92 mm	76 mm	151.07.001

KNOB

DIAMETER	HEIGHT	CAT. NO.
POLISHED NICKEL		
31 mm	32 mm	134.97.710
38 mm	39 mm	134.97.711
BRUSHED COPPER*		
38 mm	39 mm	134.97.011



*Product is subject to variations in finish due to the finishing and manufacturing process of certain materials

VINTAGE

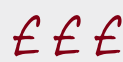
COTSWOLD



KNOB

With a highly polished finish, the Cotswold knob has a traditional style and is perfect for a vintage aesthetic.

DIAMETER	HEIGHT	CAT. NO.
POLISHED NICKEL		
31 mm	33 mm	133.32.710
38 mm	36 mm	133.32.711



Note: ±3mm tolerance on non-critical dimensions



COTSWOLD



KNOB

The Cotswold knob is a round knob available in two finishes for the vintage look.

DIAMETER	HEIGHT	CAT. NO.
BRONZED AND BRUSHED*		
33 mm	33 mm	133.32.100
POLISHED BRASS		
33 mm	33 mm	133.32.800



*Product is subject to variations in finish due to the finishing and manufacturing process of certain materials

Note: ±3mm tolerance on non-critical dimensions

CLAYTON



KNOB

A modern take on the traditional style knob, the Clayton has a flatter face available in two finishes.

DIAMETER	HEIGHT	CAT. NO.
POLISHED BRASS		
30 mm	21 mm	137.71.803
POLISHED CHROME		
30 mm	21 mm	137.71.205



VINTAGE

CYRUS



KNOB

The Cyrus is a cylindrical knob available in polished nickel.

DIAMETER	HEIGHT	CAT. NO.
POLISHED NICKEL		
16 mm	20 mm	137.03.216
19 mm	24 mm	137.03.225
25 mm	32 mm	137.03.234



GROSVENOR



KNOB

The Grosvenor knob is a luxurious looking product available in two finishes.

DIAMETER	HEIGHT	CAT. NO.
POLISHED CHROME		
32 mm	28 mm	137.00.224
38 mm	30 mm	137.00.205
POLISHED BRASS		
32 mm	28 mm	137.00.822
38 mm	30 mm	137.00.805



CORRINE



KNOB

The Corrine has a wide face and a small attachment to the cabinet. Available in two finishes.

DIAMETER	HEIGHT	CAT. NO.
POLISHED CHROME		
32 mm	25 mm	137.72.202
POLISHED BRASS		
32 mm	25 mm	137.72.800



KENDRICK



KNOB

The Kendrick is a small spherical knob with a wide attachment.

DIAMETER	HEIGHT	CAT. NO.
POLISHED CHROME		
25 mm	30 mm	137.02.228
30 mm	34 mm	137.02.237



VINTAGE

CARTON



KNOB

With a large face and small attachment, the Carton is a vintage style knob in antique brass.

DIAMETER	HEIGHT	CAT. NO.
ANTIQUE BRASS		
40 mm	30 mm	122.49.110



Product is subject to variations in finish due to the finishing and manufacturing process of certain materials

CHESTER



KNOB

The Chester has a rugby ball shaped knob in antique brass.

WIDTH	HEIGHT	CAT. NO.
ANTIQUE BRASS		
40 mm	35 mm	120.70.160



Product is subject to variations in finish due to the finishing and manufacturing process of certain materials



Photo shows Chester handle, page 74

URBAN

With modern day influences shaping urban life, the materials in this range are combinations of Metal, Wood, Acrylic, Glass and Plastic, offering the most stylish and striking design applications.





HARLEY



KNOB

The Harley is a luxurious knob with a crystal effect and a polished chrome base.

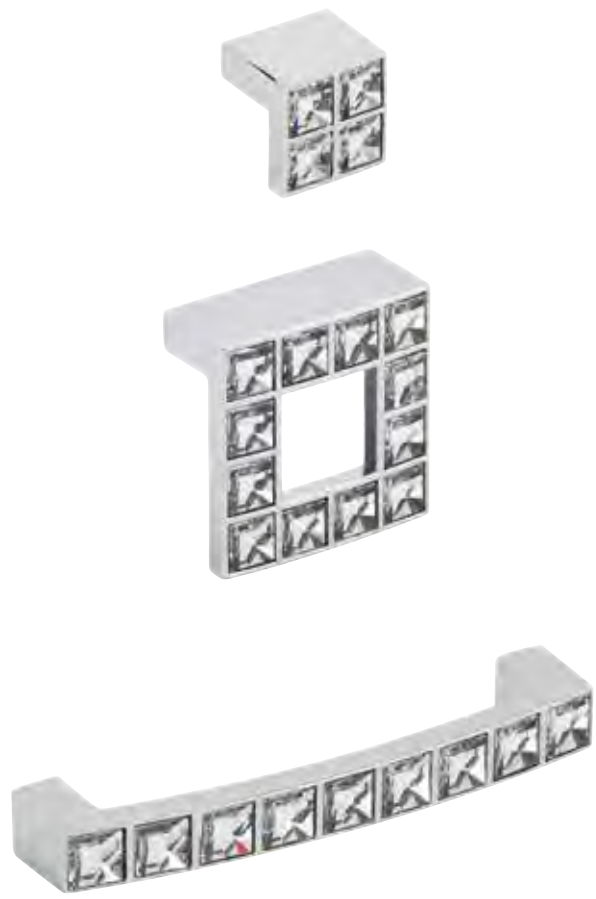
DIAMETER	HEIGHT	CAT. NO.
POLISHED CHROME		
30 mm	41 mm	139.60.422
35 mm	45 mm	139.60.423

£ £ £



URBAN

CRYSTAL



Made with CRYSTALLIZED™
Swarovski Elements.

A product from the luxurious Crystal range will transform a cabinet into a real showcase piece.

PULL

WIDTH	HEIGHT	CAT. NO.
POLISHED CHROME		
25 mm	23 mm	132.19.240

PULL

WIDTH	HEIGHT	CAT. NO.
POLISHED CHROME		
48 mm	21.5 mm	132.19.220

D HANDLE

LENGTH	HOLE CENTRES	CAT. NO.
POLISHED CHROME		
107 mm	96 mm	103.29.221
140 mm	128 mm	103.29.222

£££



GLACIO



The Glacio collection blends crystal-clear handles and knobs with polished nickel mountings, beautifully finished to give an ethereal look and feel.

PULL

LENGTH	HOLE CENTRES	CAT. NO.
POLISHED NICKEL/CLEAR		
167 mm	128 mm	133.53.039
200 mm	160 mm	133.53.040

KNOB

DIAMETER	HEIGHT	CAT. NO.
POLISHED NICKEL/CLEAR		
44 mm	25 mm	133.50.122

SQUARE KNOB

SIZE	HEIGHT	CAT. NO.
POLISHED NICKEL/CLEAR		
35 mm	33 mm	133.50.120

£££



URBAN

GLITTER



The Glitter range adds sparkle to your cabinets with it's glittery effect on a polished nickel base.

PULL

LENGTH	HOLE CENTRES	CAT. NO.
POLISHED NICKEL/CLEAR		
198 mm	160 mm	110.22.253

KNOB

SIZE	HEIGHT	CAT. NO.
POLISHED NICKEL/CLEAR		
57 mm	22 mm	132.15.220

KNOB

DIAMETER	HEIGHT	CAT. NO.
POLISHED NICKEL/CLEAR		
24 mm	22 mm	132.15.210

£ £ £





TILAA



BAR

For a real urban feel, the Tilaa bar is a wooden handle which adds texture to your cabinets.

LENGTH	HOLE CENTRES	CAT. NO.
SMOKED OAK/COPPER		
218 mm	160 mm	193.18.426
WALNUT/COPPER		
218 mm	160 mm	193.18.736*

£££



*Fixings not included

Product is subject to variations in colour and dimensions due to being manufactured from natural materials

CADOGAN



KNOB

With a concaved shape, the Cadogan knob is available in three wooden finishes.

DIAMETER	HEIGHT	CAT. NO.
BLACK ASH		
42 mm	28 mm	196.83.425
OAK LACQUERED		
42 mm	28 mm	195.79.423
67 mm	28 mm	195.79.413
WALNUT LACQUERED		
67 mm	28 mm	195.79.711



Product is subject to variations in colour and dimensions due to being manufactured from natural materials



Photo shows Cadogan handle, page 82

URBAN

CONTACT



D HANDLE

Combining a modern shape with a wooden effect, the Contact D handle is a great choice for modern furniture.

LENGTH	HOLE CENTRES	CAT. NO.
WALNUT		
182 mm	160 mm	193.18.766



Product is subject to variations in colour and dimensions due to being manufactured from natural materials



EROS



PULL

The Eros is an elegant wooden pull handle with its long lines and arch.

LENGTH	HOLE CENTRES	CAT. NO.
OAK LACQUERED		
294 mm	192 mm	193.18.420
394 mm	256 mm	193.18.421
594 mm	192/512 mm	193.18.423



Product is subject to variations in colour and dimensions due to being manufactured from natural materials

ULTRA



PULL

The Ultra is a bold pull handle in black ash with long lines.

LENGTH	HOLE CENTRES	CAT. NO.
BLACK (ASH)		
294 mm	192 mm	193.18.417
394 mm	256 mm	193.18.418
594 mm	160/480 mm	193.18.419



Product is subject to variations in colour and dimensions due to being manufactured from natural materials

URBAN

VENUS



PULL

The Venus pull handle has an oval shape and an oak finish.

LENGTH	HOLE CENTRES	CAT. NO.
OAK LACQUERED		
190 mm	128 mm	193.18.430
316 mm	224 mm	193.18.431

£££



Product is subject to variations in colour and dimensions due to being manufactured from natural materials

TWIST



PULL

The Twist pull handle is an unusually shaped handle with its twisting centre.

LENGTH	HOLE CENTRES	CAT. NO.
OAK UNFINISHED		
270 mm	224 mm	193.43.428
288 mm	320 mm	193.43.429

£££



Product is subject to variations in colour and dimensions due to being manufactured from natural materials



Photo shows Twist handle, page 86

SLEEK & SIMPLE

Sometimes you just want understated glamour in the form of an affordable, clean-cut functional design. Sleek and Simple is where you find all manner of interesting bar, bow and boss handles to suit all types of furniture applications.



BARKSTON



BAR

The Barkston bar handle will look great in any room with its sleek and simple design.

LENGTH	HOLE CENTRES	CAT. NO.
STAINLESS STEEL EFFECT		
136 mm	96 mm	101.20.709*
168 mm	128 mm	101.20.700
226 mm	156 mm	101.20.701
230 mm	160 mm	101.20.710
232 mm	192 mm	101.20.708*
326 mm	256 mm	101.20.702
376 mm	306 mm	101.20.703
426 mm	356 mm	101.20.704*
526 mm	456 mm	101.20.705*
702 mm	632 mm	101.20.706*
828 mm	758 mm	101.20.707*



*Fixings not included

SLEEK & SIMPLE



BARTRAM



BAR

The Bartram bar is a sleek and simple design available in aged finishes for an added depth to your design.

LENGTH	HOLE CENTRES	CAT. NO.
ANTIQUE COPPER		
178 mm	128 mm	117.97.062*
220 mm	160 mm	117.97.063
BRUSHED OIL RUBBED BRONZE		
178 mm	128 mm	117.97.162*
220 mm	160 mm	117.97.163*



*Fixings not included

CHELSEA



BAR

The Chelsea bar handle features line detail and a rectangular attachment point for added design elements.

LENGTH	HOLE CENTRES	CAT. NO.
STAINLESS STEEL EFFECT		
153 mm	128 mm	115.69.012
185 mm	160 mm	115.69.013
281 mm	256 mm	115.69.016
381 mm	356 mm	115.69.017
537 mm	512 mm	115.69.018
702 mm	632 mm	115.69.019



SLEEK & SIMPLE

PIMLICO



BAR

The Pimlico handle has a ring feature to add different levels to the overall design. A very popular choice for modern looks.

LENGTH	HOLE CENTRES	CAT. NO.
STAINLESS STEEL EFFECT		
168 mm	128 mm	115.66.045
232 mm	192 mm	115.66.046
264 mm	224 mm	115.66.047
424 mm	384 mm	115.66.048

£ £ £



BOSTON



BAR

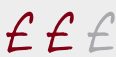
The Boston bar is a sturdy looking handle with its chunky attachment points and thick cylindrical handle.

LENGTH	HOLE CENTRES	CAT. NO.
STAINLESS STEEL EFFECT (HOLLOW STAINLESS STEEL TUBE)		
156 mm	128 mm	115.69.002
188 mm	160 mm	115.69.003*
220 mm	192 mm	115.69.004
237 mm	209 mm	104.74.011
284 mm	256 mm	115.69.006
337 mm	309 mm	104.74.012
348 mm	320 mm	115.69.008
387 mm	359 mm	104.74.013
437 mm	409 mm	104.74.014
476 mm	448 mm	115.69.009
537 mm	509 mm	104.74.015



*Fixings included

LENGTH	HOLE CENTRES	CAT. NO.
STAINLESS STEEL EFFECT (SOLID STEEL BAR)		
751 mm	709 mm	104.74.016
849 mm	807 mm	104.74.017
951 mm	909 mm	104.74.018
1199 mm	1157 mm	104.74.019



SLEEK & SIMPLE

MELBURY



BOW

The Melbury bow handle has a smooth curve to it, available in two popular finishes.

LENGTH	HOLE CENTRES	CAT. NO.
STAINLESS STEEL EFFECT		
172 mm	128 mm	113.82.015
POLISHED CHROME		
268 mm	256 mm	113.82.219



ARGYLL



D HANDLE

The Argyll D handle is available in a range of sizes to suit your design.

LENGTH	HOLE CENTRES	CAT. NO.
STAINLESS STEEL EFFECT		
140 mm	128 mm	113.50.602
172 mm	160 mm	113.50.603
236 mm	224 mm	113.50.605
332 mm	320 mm	113.50.608
396 mm	384 mm	113.50.609
492 mm	480 mm	113.50.610
524 mm	512 mm	113.50.611

£ £ £



CORDELIA



BOW

The Cordelia bow handle is a modern curved handle that will suit any design. It's finished in polished chrome to add the feel of luxury.

LENGTH	HOLE CENTRES	CAT. NO.
POLISHED CHROME		
86.5 mm	64 mm	107.66.210
150 mm	128 mm	107.66.212
186 mm	160 mm	107.66.213
318 mm	288 mm	107.66.217

£££



HUDSON



BOW

The Hudson bow handle has a long curve with a flat face making it a very sleek design.

LENGTH	HOLE CENTRES	CAT. NO.
POLISHED CHROME		
190 mm	160 mm	102.34.213
320 mm	288 mm	102.34.217

£ £ £



MORGAN



D HANDLE

The Morgan D handle has a smooth finish in comparison to its square appearance with 90 degree corners.

LENGTH	HOLE CENTRES	CAT. NO.
POLISHED CHROME		
136 mm	128 mm	102.12.232

£ £ £



SLEEK & SIMPLE

LINCOLN



D HANDLE

The Lincoln D handle has a thin design for a sleek appearance on any cabinet.

LENGTH	HOLE CENTRES	CAT. NO.
POLISHED CHROME		
113 mm	96 mm	107.03.244
189 mm	160 mm	107.24.246
224 mm	192 mm	107.24.247
290 mm	256 mm	107.24.248
353 mm	320 mm	107.24.249
STAINLESS STEEL EFFECT		
113 mm	96 mm	107.03.644
189 mm	160 mm	107.24.646
224 mm	192 mm	107.24.647
290 mm	256 mm	107.24.648
353 mm	320 mm	107.24.649



LEWIS



BOW

The Lewis bow handle has a very smooth appearance with its effortless arch and stainless steel finish.

LENGTH	HOLE CENTRES	CAT. NO.
STAINLESS STEEL EFFECT		
160 mm	128 mm	107.72.602
193 mm	160 mm	107.72.603



BRONTE



D HANDLE

The Bronte D handle has rounded corners for a smooth appearance on a cabinet.

LENGTH	HOLE CENTRES	CAT. NO.
POLISHED CHROME		
200 mm	160/192 mm	113.96.246
330 mm	288/320 mm	113.96.249



SLEEK & SIMPLE

QUIGLEY



BOW

The Quigley bow handle has an unusual design with its thinner centre contrasting its wider ends.

LENGTH	HOLE CENTRES	CAT. NO.
POLISHED CHROME		
185 mm	128 mm	109.29.202
MATT NICKEL		
185 mm	128 mm	109.29.602
ALUMINIUM COLOURED		
185 mm	128 mm	109.29.402



FLORENCE



BOW

The Florence bow handle has a smooth arch with sturdy attachment points to the cabinet.

LENGTH	HOLE CENTRES	CAT. NO.
STAINLESS STEEL EFFECT		
168 mm	128 mm	109.53.635
200 mm	160 mm	109.53.636



OCTAVIA



LIGHTWEIGHT BOW

The Octavia lightweight bow has a very smooth and sleek design with its long curve and two finishes.

LENGTH	HOLE CENTRES	CAT. NO.
MATT NICKEL		
183 mm	128 mm	102.33.605
POLISHED CHROME		
183 mm	128 mm	102.33.205



HARRINGTON



D HANDLE

The Harrington D handle features rounded edges in two popular finishes.

LENGTH	HOLE CENTRES	CAT. NO.
POLISHED CHROME		
179 mm	160 mm	111.85.223
STAINLESS STEEL EFFECT		
179 mm	160 mm	111.85.023



SLEEK & SIMPLE

LOGAN



BOW

The Logan bow handle is ideal if you're looking for a bit of rustic character with your smooth and sleek design.

LENGTH	HOLE CENTRES	CAT. NO.
STAINLESS STEEL EFFECT		
125 mm	96 mm	102.85.610
162 mm	128 mm	102.85.620

£ £ £



MANDALAY



D HANDLE

The Mandalay D handle is simple and effective with its cylindrical pipe rounded at the ends. Available in a variety of sizes.

LENGTH	HOLE CENTRES	CAT. NO.
GRADE 304 BRUSHED STAINLESS STEEL		
74 mm	64 mm	117.40.613
106 mm	96 mm	117.40.622
138 mm	128 mm	117.40.631*
170 mm	160 mm	117.40.640
298 mm	288 mm	117.40.659
362 mm	352 mm	117.40.668



*Fixings included

SLEEK & SIMPLE

CLIFTON



BOW

The Clifton bow handle features a smooth curve and is available in a variety of sizes to suit your design.

LENGTH	HOLE CENTRES	CAT. NO.
BRUSHED STAINLESS STEEL EFFECT		
111 mm	96 mm	117.31.021
148 mm	128 mm	117.31.031*
184 mm	160 mm	117.31.041
221 mm	192 mm	117.31.052
258 mm	224 mm	117.31.053
297 mm	256 mm	117.31.061
332 mm	288 mm	117.31.071

*Fixings included



LISTER



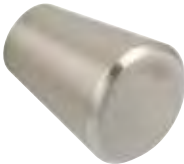
TRIM

The Lister trim has a very sleek design with a simple lip for fingers to pull the cabinet or drawer open. Available in brushed nickel.

LENGTH	HOLE CENTRES	CAT. NO.
BRUSHED NICKEL		
147 mm	128 mm	126.17.641
297 mm	256 mm	126.17.642



BINX



KNOB

The Binx knob has a modern design with a cylinder that thins as it gets closer to the cabinet.

DIAMETER	HEIGHT	CAT. NO.
STAINLESS STEEL EFFECT		
24 mm	29 mm	135.47.600



ORIEL



KNOB

The Oriel knob has a wide face and small attachment point, available in three popular finishes to suit any design.

DIAMETER	HEIGHT	CAT. NO.
MATT NICKEL		
32 mm	26 mm	134.02.600
STAINLESS STEEL EFFECT		
32 mm	26 mm	135.24.600
POLISHED CHROME		
32 mm	26 mm	133.09.200



SLEEK & SIMPLE

LEO



KNOB

The Leo knob is cylindrical in shape with a small dent for the fingers to grip when in use. Available in stainless steel effect.

DIAMETER	HEIGHT	CAT. NO.
STAINLESS STEEL EFFECT		
12 mm	23 mm	135.63.601
20 mm	25 mm	135.63.602



CASSIUS



KNOB

The Cassius knob is a smooth finished knob with a wide face and thin depth, available in stainless steel effect.

DIAMETER	HEIGHT	CAT. NO.
STAINLESS STEEL EFFECT		
29.5 mm	24 mm	137.35.600



ASPEN



KNOB

The Aspen knob is a simple traditional style knob, perfect for any design. Available in stainless steel effect.

DIAMETER	HEIGHT	CAT. NO.
STAINLESS STEEL EFFECT		
35 mm	26 mm	134.61.620

£ £ £



HANDLE JIG



Simple jig which accurately marks out door and drawer fronts in preparation for fixing handles and knobs

ITEM	CAT. NO.
Handle jig	001.35.030

MICROFIBRE CLOTH



Perfect for cleaning all types of handles and knobs without using chemicals that could damage the surface finish.

COLOUR	SIZE	CAT. NO.
Blue	390 x 370 mm	008.54.565

M4 HANDLE SCREWS



STANDARD PACK

Flat head with combi-cross slot. Zinc-plated steel. *45 and 50 mm lengths with 35 mm thread lengths.

LENGTH	CAT. NO.	ORDER QTY
M4x 9 mm	022.35.090	100
M4x 10 mm	022.35.109	100
M4x 12 mm	022.35.127	100
M4x 15 mm	022.35.154	100
M4x 18 mm	022.35.181	100
M4x 20 mm	022.35.207	100
M4x 22 mm	022.35.225	100
M4x 23 mm	022.35.234	100
M4x 25 mm	022.35.252	100
M4x 26 mm	022.35.261	100
M4x 28 mm	022.35.289	100
M4x 30 mm	022.35.305	100
M4x 32 mm	022.35.323	100
M4x 35 mm	022.35.350	100
M4x 38 mm	022.35.387	100
M4x 40 mm	022.35.403	100
M4x 45 mm	022.35.458*	100
M4x 50 mm	022.35.501*	100

SNAP OFF SCREW

Flat head with combi-cross slot. Due to segmentation, screw can be broken at 5 mm increments, shortest length 20 mm. Yellow chromated steel

LENGTH	CAT. NO.	ORDER QTY
M4x 20-45 mm	022.35.887	100
M4x 20-45 mm	022.35.888	50

CARE & MAINTENANCE

We advocate the use of a dry cloth only to clean handles. Please do not under any circumstances use any form of metal cleaner or aerosol spray.

Our microfibre cloth is perfect for cleaning all types of handles and knobs without using chemicals that could damage the surface finish.



Microfibre cloth Cat. No. 008.54.565, shown on page 108

KEY TO LOGOS



Fixing screws are included



Fixing required - Denotes the size and type of fixings required



Exclusive to Häfele UK - These handles are only available from Häfele UK. These are exceptionally innovative designs made of quality materials



Made in Great Britain - These handles are designed and manufactured in the UK



Dimension Tolerances - Due to the manufacturing processes of certain materials these handles are more subject to variations in dimensions



Identifies our most cost-effective option. Great for projects on a budget.



Straight down the middle for pricing and aesthetics. If you're looking for handles with a bit more flair and are willing to put some more budget aside for them, these are the handles for you.



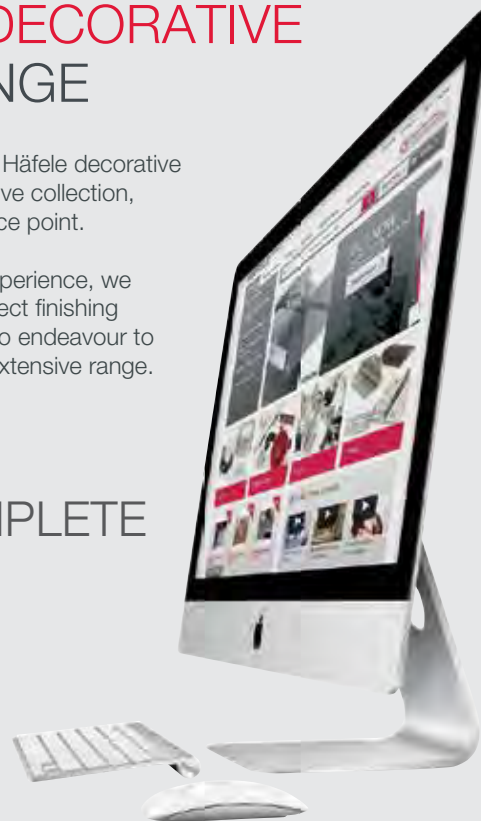
For the more extravagant designs and budgets to match, these handles are certainly statement pieces for quality and design.

THE HÄFELE DECORATIVE HANDLES RANGE

Combining form and function, the Häfele decorative handles range provides an extensive collection, spanning every size, finish and price point.

Using over 90 years of industry experience, we understand that selecting the perfect finishing touches completes your design, so endeavour to meet your every need within our extensive range.

VIEW OUR COMPLETE RANGE 24/7



Visit hafele.co.uk

RANGE INDEX

Range name	Section	Page	Range name	Section	Page	Range name	Section	Page
Acacia	Modern Life	36	Cyrus	Vintage	72	Noma	Modern Life	12
Angel	Modern Life	32	Disco	Modern Life	33	Norfolk	Modern Classics	49
Arco	Modern Life	18	Ella	Modern Life	7	Oberon	Modern Life	42
Argyll	Sleek & Simple	95	Eros	Urban	85	Octavia	Sleek & Simple	101
Ariel	Modern Classics	59	Fabian	Modern Classics	64	Odessa	Modern Classics	56-57
Aspen	Sleek & Simple	107	Factory	Modern Life	22	Ona	Modern Life	11
Augusta	Modern Classics	54-55	Finn	Modern Life	6	Oriel	Sleek & Simple	105
Avalon	Modern Life	14	Florence	Sleek & Simple	100	Osaka	Modern Life	20
Barkston	Sleek & Simple	89	Glacio	Urban	79	Pembridge	Modern Life	29
Bartram	Sleek & Simple	90	Glitter	Urban	80	Pimlico	Sleek & Simple	92
Berwick	Modern Classics	51	Graf 2	Modern Life	30-31	Plane	Modern Life	27
Binx	Sleek & Simple	105	Graf	Modern Life	31	Portobello	Modern Life	13
Bioko	Modern Life	5	Grosvenor	Vintage	72	Queslett	Modern Classics	66
Boston	Sleek & Simple	93	Harley	Urban	77	Quigley	Sleek & Simple	100
Brera	Modern Classics	47	Harrington	Sleek & Simple	101	Quinn	Modern Life	7
Bronte	Sleek & Simple	99	Henrietta	Modern Classics	60-61	Raviolo	Modern Life	25
Button	Modern Life	24	Hudson	Sleek & Simple	97	Rochdale	Modern Life	41
Buxton	Modern Classics	65	Kane	Modern Life	40	Ritta	Modern Life	10
Cadogan	Urban	82	Kendrick	Vintage	73	Sea Grass	Modern Life	39
Carrione	Modern Life	43	Knightsbridge	Modern Classics	63	Shapes	Modern Classics	48
Carton	Vintage	74	Leo	Sleek & Simple	106	Smooth	Modern Classics	52
Cassius	Sleek & Simple	106	Level	Modern Life	26	Sorrento	Modern Classics	64
Chatsworth	Vintage	69	Lewis	Sleek & Simple	99	St. Vincent	Modern Life	44
Chelsea	Sleek & Simple	91	Libra	Modern Life	19	Swing	Modern Life	23
Chester	Vintage	74	Lincoln	Sleek & Simple	98	Taper	Modern Classics	49
Clayton	Vintage	71	Line	Modern Life	16	Tilaa	Urban	81
Clifton	Sleek & Simple	104	Lister	Sleek & Simple	104	Tonda	Modern Life	22
Coco	Modern Life	36	Logan	Sleek & Simple	102	Twister	Modern Classics	50
Contact	Urban	84	Luca	Modern Life	5	Twist	Urban	86
Cordelia	Sleek & Simple	96	Mandalay	Sleek & Simple	103	U	Modern Life	34
Corrine	Vintage	73	Mayberry	Modern Classics	62	Ultra	Urban	85
Cotswold	Vintage	70-71	Melbury	Sleek & Simple	94	Venus	Urban	86
Crystal	Urban	78	Metropolis	Modern Life	37			
Curly	Modern Life	28	Morgan	Sleek & Simple	97			
Curve	Modern Life	8	Nick	Modern Life	9			

© Häfele UK 2019

No part of this catalogue may be reproduced, photocopied or stored in any data retrieval system without written permission.



732.04.371-09/19-DECORATIVE HANDLES BROCHURE

Häfele UK Ltd | Swift Valley Industrial Estate Rugby Warwickshire CV21 1RD Registered in England No. 1486136

Phone: 0800 171 2909 | **Fax:** 01788 544440 **Email:** info@hafele.co.uk **Technical:** 0800 171 2908

hafele.co.uk